

SAMPLE ASSESSMENT ACTIVITY

Sample Map

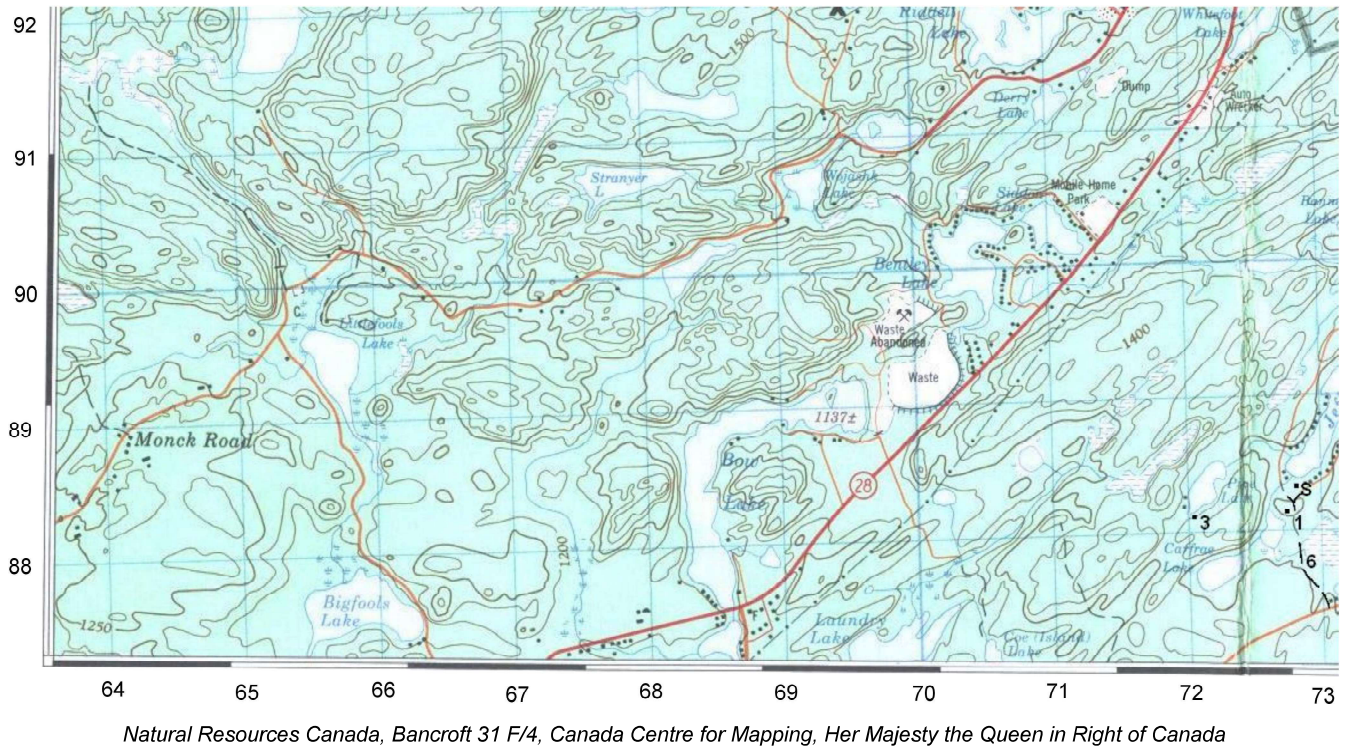


Figure 3B6-1 Assessment Activity Map



All points are located in the lower right-hand corner. To clearly identify the designated points and terrain features, [Figure 3B6-1](#) is best viewed in colour.

The cadets will be given a compass, map, worksheet and access to a calculator. The map has been marked with the start point, “S” and the three other points, “1”, “3”, and “6”, for which to determine six-figure GRs. The other three points, for legs two, four and five, will be marked on the map by the cadet from the six-figure GRs on the worksheet. All seven points have a descriptive word or phrase to help identify it. The cadets will complete the worksheet then move on to the course to complete three legs each. When the course has been completed, the cadets will do a self-assessment with their assessor and receive a copy of their Assessment Checklist by the next parade night.

A sample and completed worksheet are shown as examples for this sample assessment activity. The blank worksheet may be used as a template.

CADET WORKSHEET (sample)

Name: _____

Personal Pace: _____

#	GR	Distance		Bearing	Description
		m	paces		
S	728883	m	paces	X	most southerly cabin on Jeffrey Lake
1					cabin by vehicle track fork
2	722882				shore of Pipe Lake near the "L" of lake
3					most southerly cabin on Pipe Lake
4	720878				shore of Carfrae Lake near the "e" of lake
5	723873				hill south of Carfrae Lake
6					vehicle track crossing creek south of cabin

Magnetic Declination: 11° west declination

Safety Bearing: 120°

Will lead to either a gravel road or a vehicle trail; wait at the side of the road/trail for the safety vehicle.

Calculations:

CADET WORKSHEET (completed sample):

Name: _____ F/Cpl Bloggins _____

Personal Pace: _____ 140 _____

#	GR	Distance		Bearing	Description
		m	paces		
S	728883	m	paces	X	most southerly cabin on Jeffrey Lake
1	727881	200	280	199°	cabin by vehicle track fork
2	722882	500	700	282°	shore of Pipe Lake near the "L" of lake
3	720881	200	280	230°	most southerly cabin on Pipe Lake
4	720878	450	630	180°	shore of Carfrae Lake near the "e" of lake
5	723873	450	630	154°	hill south of Carfrae Lake
6	728878	800	1120	44°	vehicle track crossing creek

Magnetic Declination: 11° west declination

Safety Bearing: 120°

Will lead to either a gravel road or a vehicle trail; wait at the side of the road/trail for the safety vehicle.

Calculations:

CADET WORKSHEET

Name: _____

Personal Pace: _____

#	GR	Distance		Bearing	Description
		m	paces		
S				X	
1					
2					
3					
4					
5					
6					

Magnetic Declination:

Safety Bearing:

Calculations:

This form shall be reproduced locally.